

Mantall®
美通重工 FORKLIFT

H4 **SERIES**

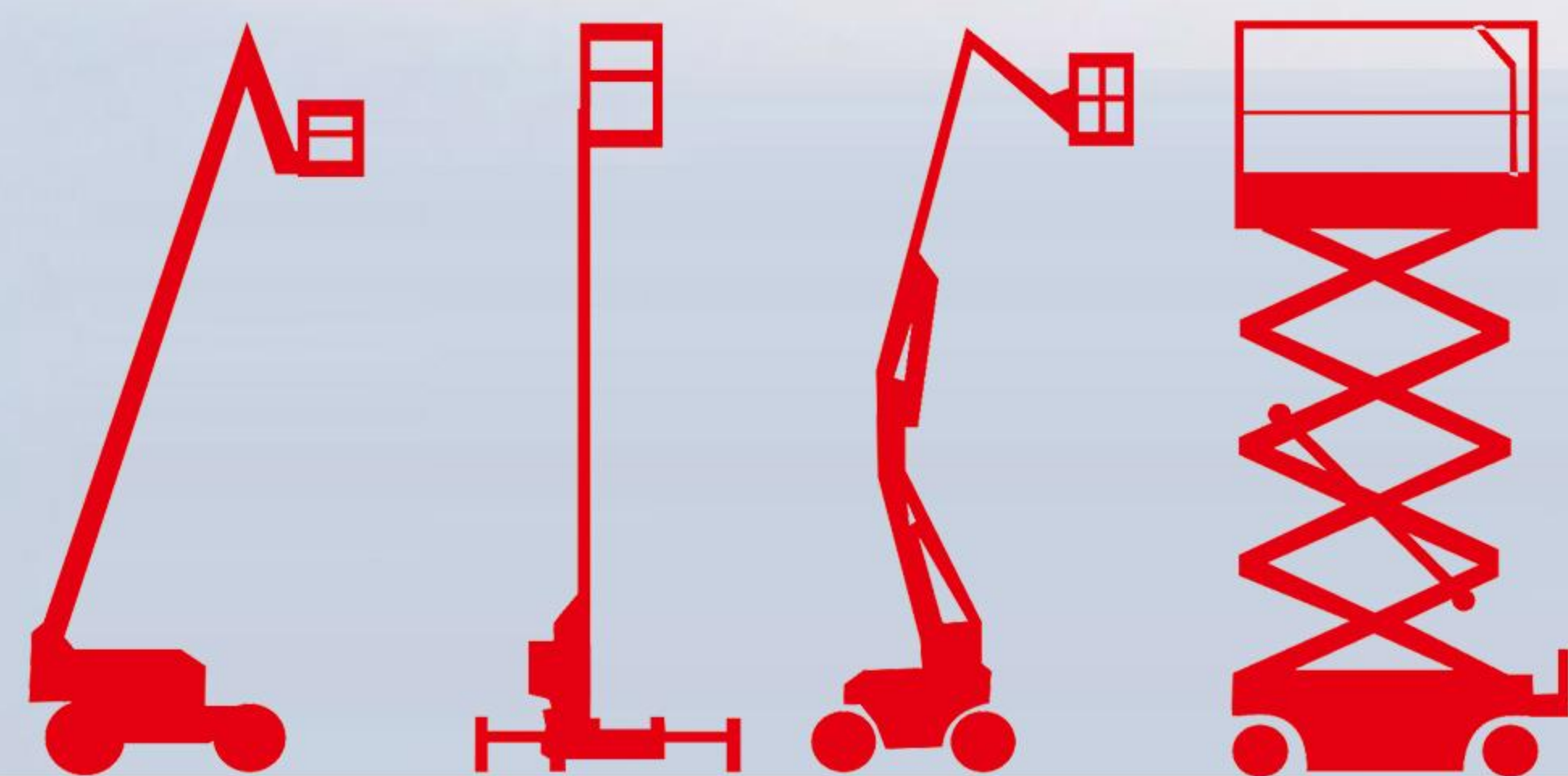
内燃平衡重式叉车

INTERNAL COMBUSTION
COUNTERBALANCE FORKLIFT

2-3.5T



Mantall® 美通重工有限公司
美通重工 Mantall Heavy Industry CO.,LTD



HIGH RELIABILITY 高可靠性



01 / 变速箱、驱动桥与转向桥等核心部件高起点，从源头确保产品可靠性；

Core components such as gearbox, drive axle and steering axle adopt high-standard design, ensuring product reliability from the source.

02 / 排气歧管内收，蓄电池远离高温区域，有效延长蓄电池使用寿命，提升整机电气系统稳定性；

The exhaust manifold is retracted, keeping the battery away from high-temperature areas, effectively prolonging battery service life and improving the stability of the complete electrical system.

03 / 陶瓷制动蹄片的应用，让制动更安全、更高效，更环保，有效提升作业安全性及驾乘舒适性；

The application of ceramic brake shoes makes braking safer, more efficient and more eco-friendly, effectively enhancing operation safety and driving comfort.

04 / 基本型、全自由门架开档统一，门架视野提升 20%；

Unified opening width for standard mast and full free lift mast, with mast visibility improved by 20%.

05 / 起升高度≥4米的门架，外门架槽钢加强设计，抗冲击、抗变形能力提升10%-30%；

For masts with lifting height ≥ 4 m, the outer mast channel steel is reinforced, improving impact resistance and deformation resistance by 10%-30%.

06 / 货叉架采用新式复合滚轮，提高滚轮距，大幅降低高位晃动；

The fork carriage is equipped with new composite rollers, increasing roller spacing and greatly reducing high-position shaking.

07 / 落地高度低，复杂工况下的适应性更强；

Low ground clearance for stronger adaptability to complex working conditions.

08 / 燃油箱加油口角度增大到45°，加油更便捷；

The fuel filler neck angle is increased to 45° for more convenient refueling.

09 / 稳定性全面加强，作业过程更平稳、更安全；

Comprehensive enhanced stability for smoother and safer operation.

10 / 起升、下降速度增加，工作效率提升10%；

Increased lifting and lowering speeds, boosting working efficiency by 10%.

11 / 机罩优化，立体压模成型，强度更强，开启更丝滑；

Optimized hood with three-dimensional compression molding for higher strength and smoother opening.

12 / 转向桥优化设计，整车转弯半径缩小5%，机动性更强；

Optimized steering axle design reduces the whole vehicle turning radius by 5% for stronger mobility.

13 / 选配QPQ复合处理技术+转向缸护套，解决酸腐蚀工况市场痛点；

Optional QPQ composite treatment technology + steering cylinder boot to solve the market pain point of acid corrosion working conditions.

14 / 发动机水泵采用高位布局，优化配重与散热风道，显著降低风阻，实现冷却效率提升20%，冷却液平衡温度下降10°C；

The engine water pump adopts a high-position layout, optimizing counterweight and heat dissipation air duct, significantly reducing wind resistance, increasing cooling efficiency by 20% and lowering the coolant equilibrium temperature by 10°C.

15 / 液力传动油管口径加大，搭配并列式独立油散，传动油温降低15%，传动效率同步提高；

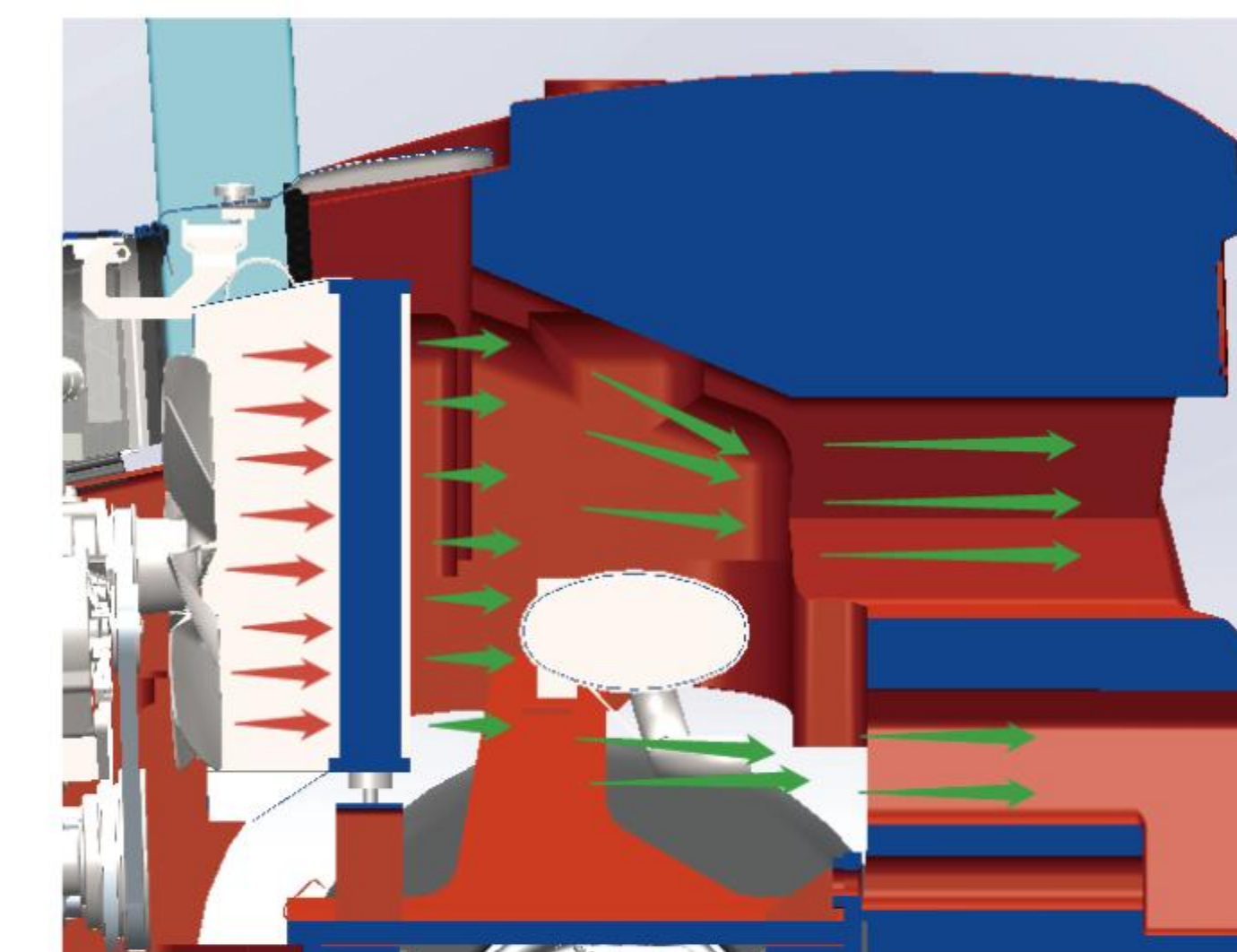
Enlarged diameter of hydraulic transmission oil pipes, matched with parallel independent oil coolers, reducing transmission oil temperature by 15% and synchronously improving transmission efficiency.

16 / 加大的液压油散热面积，液压油平衡温度降低13°C，液压系统整体散热能力提升10%，确保设备在持续高强度作业中冷静自如；

Expanded heat dissipation area for hydraulic oil, lowering hydraulic oil equilibrium temperature by 13°C and enhancing overall heat dissipation capacity of the hydraulic system by 10%, ensuring stable performance of the equipment under continuous high-intensity operation.

17 / 车架结构优化设计，加大了燃油箱及液压油箱容积，续航能力提升20%，具备1.5-2倍强度安全冗余。

Optimized frame structure design with enlarged fuel tank and hydraulic oil tank capacity, increasing endurance by 20% and providing 1.5-2 times strength safety redundancy.



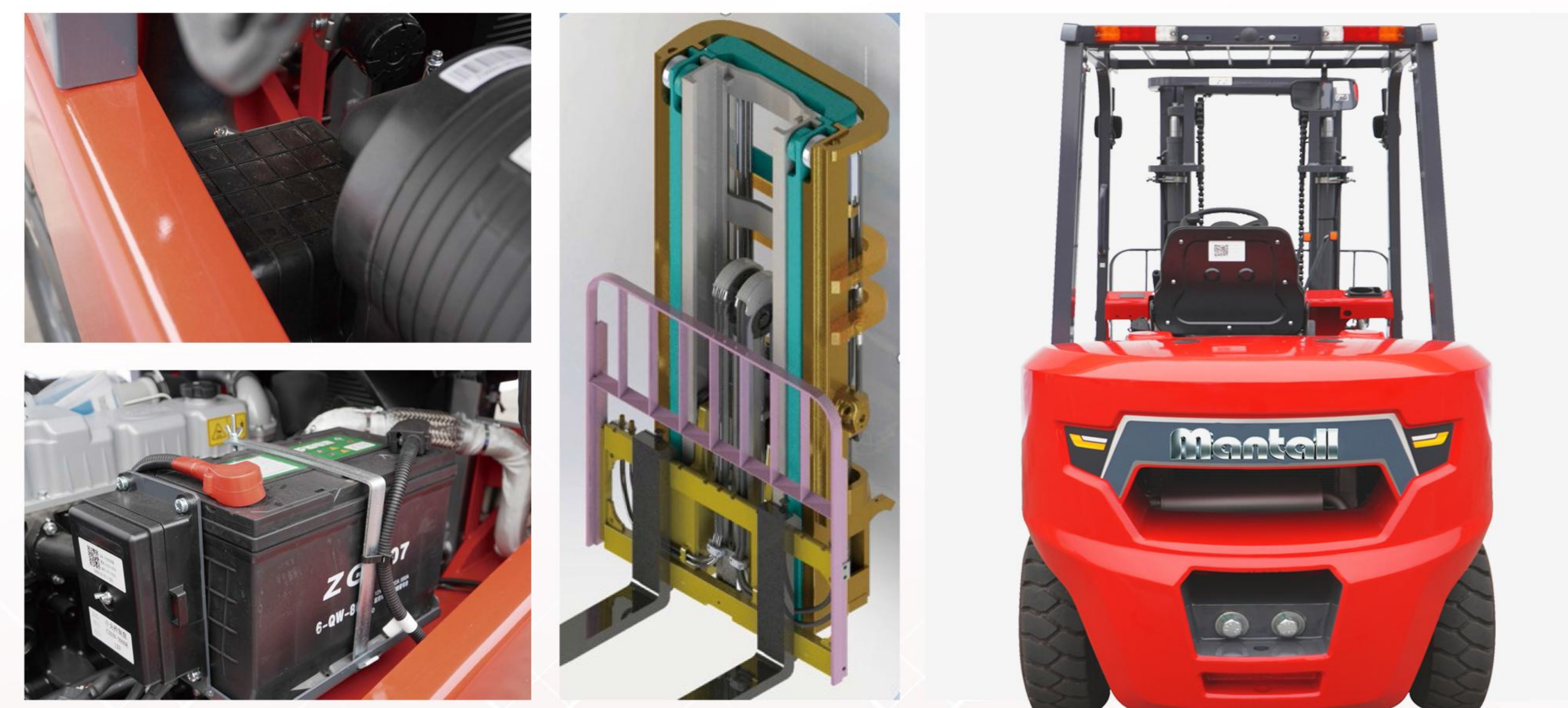
HIGH COST-EFFECTIVENESS 高性价比



- 01 / 配重增加60公斤，整车超载能力更强；**
Counterweight increased by 60 kg, delivering stronger overload capacity for the whole vehicle.
- 02 / 液压及门架系统全面升级，可靠性提升，维护成本降低；**
Fully upgraded hydraulic and mast systems improve reliability and reduce maintenance costs.
- 03 / 零部件通用性高、后市场维护便捷性高；**
High parts commonality for easy after-sales maintenance.
- 04 / 标配进气消声器，净化发动机进气，守护整机心脏，实现长效延寿。**
Standard intake muffler purifies engine intake air, protects the core power system, and extends service life.

HIGH ERGONOMICS 高人机性

- 01 / 小直径方向盘及操纵杆上翘式组合开关，操作省力；**
Small-diameter steering wheel and upturned combined control switches, ensuring effortless operation.
- 02 / 低角度油门踏板，缓解驾驶脚部疲劳；**
Low-angle accelerator pedal to relieve foot fatigue during driving.
- 03 / 金属防滑踏板，上下车脚不滑；**
Metal anti-slip pedals to prevent slipping when getting on and off the vehicle.
- 04 / 全系统一膝部空间，190cm身高不拥挤；**
Uniform knee space for the whole series, providing ample room for operators up to 190cm tall.
- 05 / 选配半包围OPS座椅，减震且护腰；**
Optional semi-enclosed OPS seat with shock absorption and lumbar support.
- 06 / 全车标配LED光源，提升夜间驾驶安全感；**
Standard LED lights for the whole vehicle, improving safety for night-time operation.
- 07 / 配备水杯盒、手机槽，便捷高效。**
Equipped with cup holder and phone slot for convenient and efficient use.



智能车队管理 INTELLIGENT FLEET MANAGEMENT



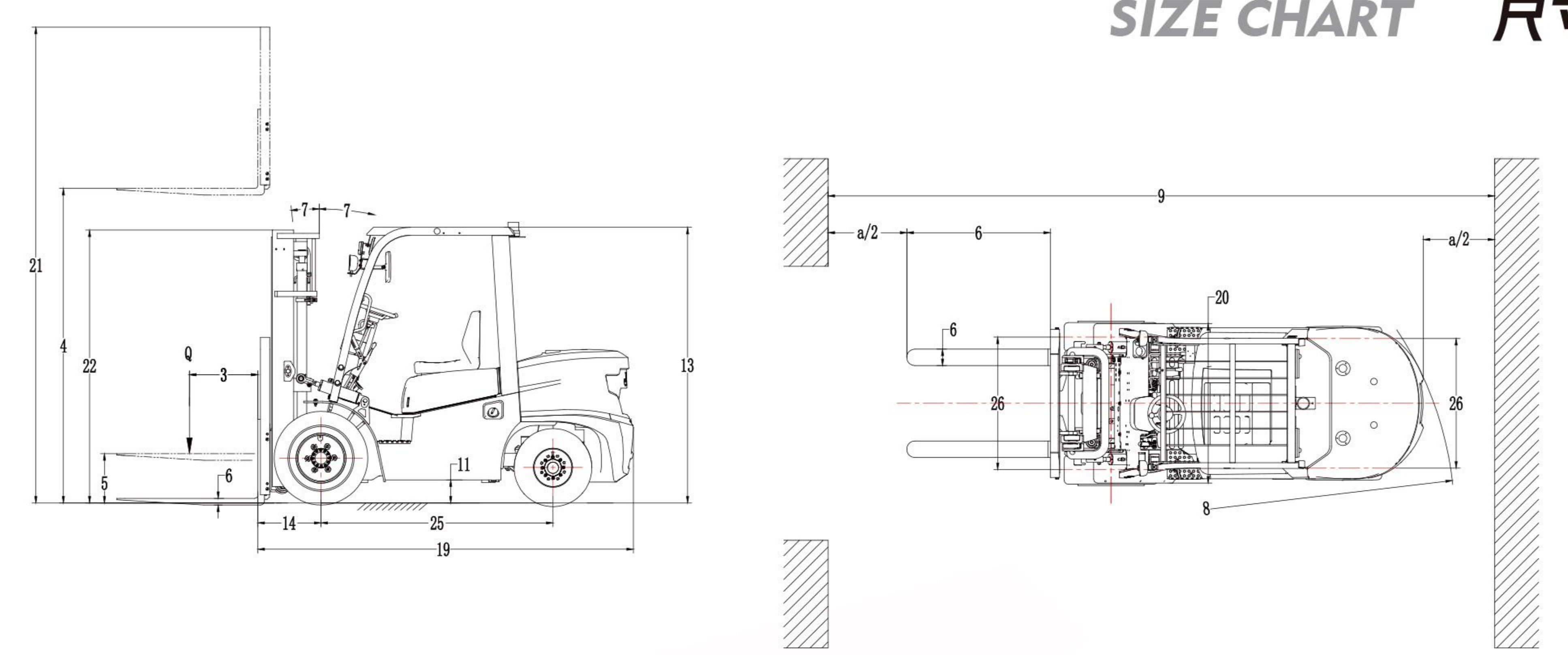
WIDE CONFIGURATION 宽配置

- 01 / 支持国四、欧五、印五、EPA等多种排放标准，并可选择单/双燃料动力；**
Supports various emission standards including China IV, Euro V, India V and EPA, with single/dual fuel power options available.
- 02 / 可提供智能防撞预警系统，360度全景显示等功能；**
Provides intelligent anti-collision warning system, 360° panoramic display and other functions.
- 03 / 可提供超大屏多功能速度报警系统，实现速度预警设定、多级超速报警；**
Provides extra-large screen multi-functional speed alarm system, supporting speed warning setting and multi-level over-speed alarm.
- 04 / 可提供智能车队管理系统，GPS定位及超位移速度报警系统，解决租赁车辆失联困扰；**
Provides intelligent fleet management system, GPS positioning and over-displacement & over-speed alarm system, solving the problem of lost contact of rental vehicles.
- 05 / 可提供货叉无线监控系统，实现叉货作业监视。**
Provides wireless fork monitoring system to realize fork operation monitoring.

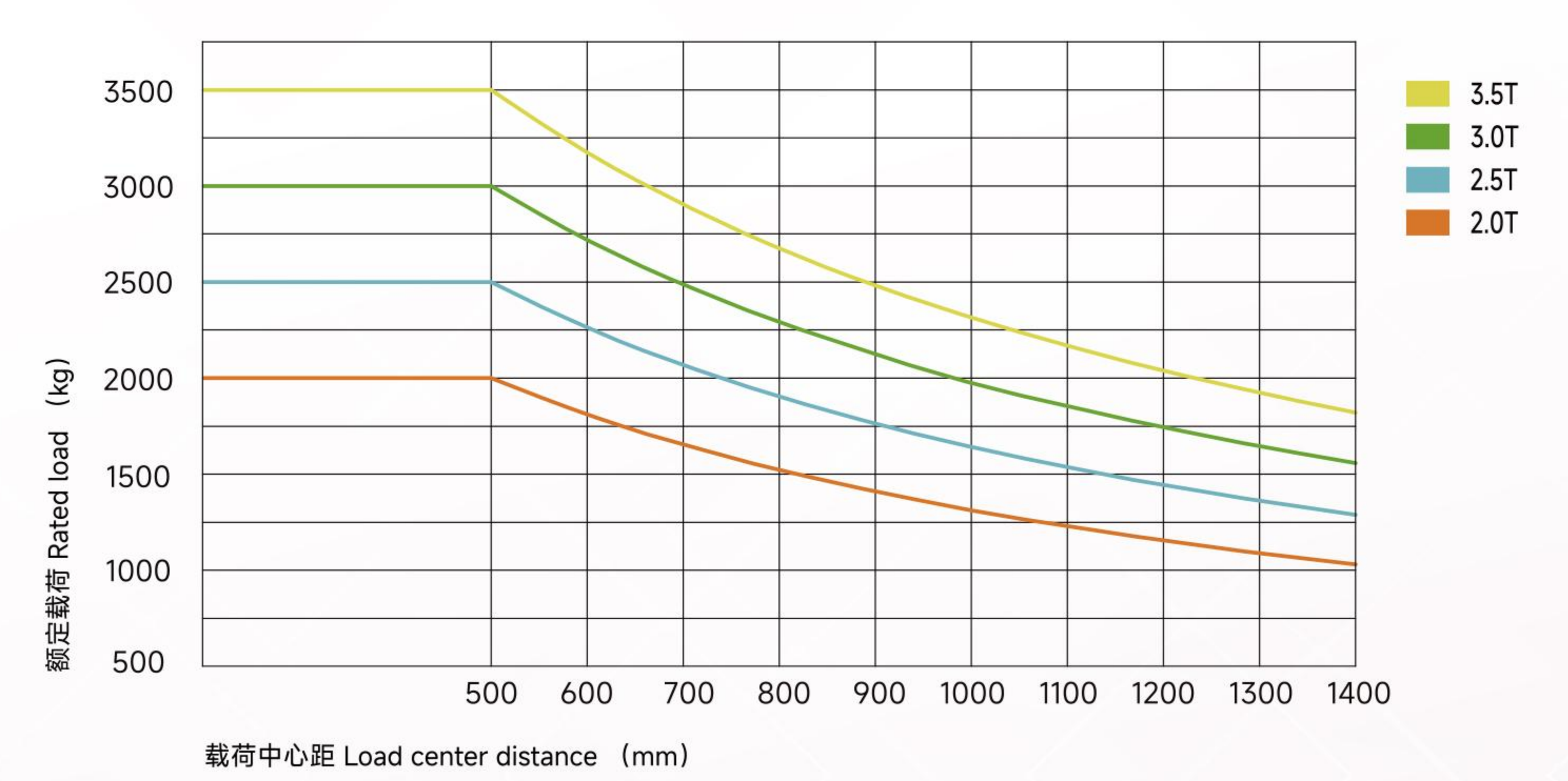
双胎/实心轮胎 Double front tyres / Solid tires	驾驶室 Operator cab	USB USB port
选用属具 Optional attachments	警示灯 Warning lights	倒车中、英文语音喇叭 Reverse voice horn (Chinese & English)
两侧后视镜/中央广角后视镜 Dual side mirrors / Central wide-angle mirror	高排气装置 High exhaust system	座椅带安全带开关 Seat with seat belt switch
GPS位移报警 GPS displacement alarm	双空滤 Dual air filters	配重防护网 Counterweight protective net
倒车影像 Rearview camera	货叉加长套 Fork extensions	QPQ防酸腐蚀转向桥 QPQ acid corrosion resistant steering axle
360行车记录仪 360° driving recorder	暖风机 Heater	整体顶棚 Integrated overhead guard
智能车队管理系统 Intelligent fleet management system	单冷空调/冷暖空调(部分车型) Cooling-only air conditioner / Heating & cooling air conditioner (for selected models)	灭火器 Fire extinguisher
超速报警 Over-speed alarm	四面摄像头 Four-side cameras	其它类型及其它高度系列门架 Other types and height series masts
加宽货叉架 Widened fork carriage	后工作灯 Rear work lights	高档座椅 Luxury seats
前、后挡风玻璃(雨刮器) Front & rear windshield (with wiper)	前后蓝光灯 Front and rear blue lights	倾斜油缸护套 Tilt cylinder boot
灭火消声器(部分车型) Fire-extinguishing muffler (for selected models)	三面周身蓝/红光灯 Three-side perimeter blue/red lights	用户指定颜色 Customized colors

型号 Model		CPCD20H4	CPCD25H4	CPC20H4	CPC25H4	CPCD30H4	CPCD35H4	CPC30H4	CPC35H4
1	动力型式 Power type	柴油 Diesel	柴油 Diesel	柴油 Diesel	柴油 Diesel	柴油 Diesel	柴油 Diesel	柴油 Diesel	柴油 Diesel
2	额定载荷 Rated load	kg 2000	2500	2000	2500	3000	3500	3000	3500
3	载荷中心距 Load center distance	mm 500	500	500	500	500	500	500	500
4	起升高度 Lift height	mm 3000	3000	3000	3000	3000	3000	3000	3000
5	自由起升高度 Free lift height	mm 130	130	130	130	135	140	135	140
6	货叉尺寸 Fork size	长×宽×厚 L×W×T	1070×122×40	1070×122×40	1070×122×40	1070×122×40	1070×125×45	1070×125×50	1070×125×50
7	门架倾角 Mast tilt angle	前/后 FR/RR	8/10	8/10	8/10	8/10	8/10	8/10	8/10
8	最小转弯半径 Minimum turning radius	mm 2300	2300	2300	2300	2480	2480	2480	2480
9	最小直角堆垛通道宽度 Minimum right angle stacking aisle width	mm 4057	4057	4057	4057	4252	4252	4252	4252
10	最小直角通道宽度 Minimum right angle aisle width	mm 2500	2500	2500	2500	2680	2680	2680	2680
11	最小离地间隙 Frame center (no load)	mm 145	145	145	145	175	175	175	175
12	门架下端 (空载) Mast Bottom (no load)	mm 110	110	110	110	130	130	130	130
13	护顶架高度 Overhang (FR)	mm 2060	2060	2060	2060	2090	2090	2090	2090
14	前悬距 Overhang (FR)	mm 457	457	457	457	472	477	472	477
15	最大行驶速度 Full load	km/h 18.0	18.0	18.0	18.0	19	19	19	19
16	空载 No load	km/h 19.0	19.0	19.0	19.0	20	20	20	20
17	最大起升速度 Full load	mm/s 620	620	620	620	560	430	560	430
18	空载 No load	mm/s 720	720	720	720	570	450	570	450
19	最大牵引力 Full load	KN 13	15	13	15	21	24	20	22
20	最大爬坡能力 Full load	% 15	15	15	15	15	15	15	15
21	全长 Without forks	mm 2654	2654	2654	2654	2842	2847	2842	2847
22	全宽	mm 1160	1160	1160	1160	1210	1210	1210	1210
23	货叉最大起升时高度(有挡货架) Mast height at maximum lift (with backrest)	mm 4024	4024	4024	4024	4210	4210	4210	4210
24	门架落地高度 Mast lowered height	mm 1995	1995	1995	1995	2065	2065	2065	2065
25	前轮 Front wheel	7.00-12-12PR	7.00-12-12PR	7.00-12-12PR	7.00-12-12PR	28×9-15-14PR	28×9-15-14PR	28×9-15-14PR	28×9-15-14PR
26	后轮 Rear wheel	6.00-9-10PR	6.00-9-10PR	6.00-9-10PR	6.00-9-10PR	6.50-10-10PR	6.50-10-10PR	6.50-10-10PR	6.50-10-10PR
27	轴距 Wheelbase	mm 1665	1665	1665	1665	1760	1760	1760	1760
28	前轮/后轮 Front wheel/rear wheel	mm 970/970	970/970	970/970	970/970	1005/984	1005/984	1005/984	1005/984
29	自重 Without load	Kg 3440	3765	3400	3765	4300	4600	4300	4600
30	蓄电池 Voltage/capacity	V/Ah 12/80	12/80	12/80	12/80	12/80	12/80	12/80	12/80
31	型号 Model	XC4D29V41	XC4D29V41	XC4D29V41	XC4D29V41	XC4D29V41	XC4D29V41	XC4D29V41	XC4D29V41
32	额定功率 Rated output	kw/r.p.m 36.8/2500	36.8/2500	36.8/2500	36.8/2500	36.8/2500	36.8/2500	36.8/2500	36.8/2500
33	额定扭矩 Rated torque	Nm/r.p.m 165/1600-1800	165/1600-1800	165/1600-1800	165/1600-1800	165/1600-1800	165/1600-1800	165/1600-1800	165/1600-1800
34	缸径×行程 Bore x stroke	mm 93×105	93×105	93×105	93×105	93×105	93×105	93×105	93×105
35	缸数 Number of cylinders	4	4	4	4	4	4	4	4
36	排量 Displacement	L 2.85	2.85	2.85	2.85	2.85	2.85	2.85	2.85
37	燃油箱容量 Fuel tank capacity	L 65	65	65	65	68	68	68	68
38	传动档位 前/后 Transmissions (FWD/RWD)	1/1手动换挡 1/1manual shift	1/1手动换挡 1/1manual shift	2/2手动换挡 2/2manual shift	2/2手动换挡 2/2manual shift	1/1手动换挡 1/1manual shift	1/1手动换挡 1/1manual shift	2/2手动换挡 2/2manual shift	2/2手动换挡 2/2manual shift
39	工作压力 Operating pressure	Mpa 18.5	18.5	18.5	18.5	18.5	18.5	18.5	18.5
40	轮胎类型 (前/后) Tire type (FR/RR)	充气胎 Pneumatic	充气胎 Pneumatic	充气胎 Pneumatic	充气胎 Pneumatic	充气胎 Pneumatic	充气胎 Pneumatic	充气胎 Pneumatic	充气胎 Pneumatic
41	车轮数 (前/后) Number of wheels (FR/RR)	Single 2/2	2/2	2/2	2/2	2/2	2/2	2/2	2/2
42	满载下降速度 Lowering speed (full load)	mm/s 440	440	440	440	460	330	460	330
43	空载下降速度 Lowering speed (no load)	mm/s 470	470	470	470	430	330	430	330
44	满载 (前/后)轴重量分配 Axle load distribution (full load) (FR/RR)	kg 4890/550	5635/630	4850/550	5635/630	6560/740	7090/1010	6560/740	7090/1010
45	空载 (前/后)轴重量分配 Axle load distribution (no load) (FR/RR)	kg 1580/1860	1540/2225	1540/1860	1540/2225	1720/2580	1460/3140	1720/2580	1460/3140

标准配置 Standard	宽 Width	厚 Thickness	长度系列 Length								适配车型 Applicable forklift	安装等级 Installation grade	
L×W×T	W	T	L										
mm	mm	mm	mm										
1070×122×40	122	40	—	920	*1070	1220	1370	1520	1670	1820	—	2t	II
1070×122×40	122	40	—	920	*1070	1220	1370	1520	1670	1820	—	2.5t	II
1070×125×45	125	45	—	920	*1070	1220	1370	1520	1670	1820	2000	3t	III
1070×125×50	125	50	—	920	*1070	1220	1370	1520	1670	1820	2000	3.5t	III



LOAD CURVE DIAGRAM 载荷曲线图



* 竖轴表示承载量，横轴表示载荷中心。载荷中心是从货叉正面计算起，标准载荷的基点是指负荷边长为1000毫米的立方体中心位置。当门架前倾、使用非标准货叉或装载超过正常宽度的负荷时，将会使承载量减少。通过负荷曲线图，能及时地了解标准门架在各种载荷中心时的承载能力。

The vertical axis represents the load capacity, and the horizontal axis represents the load center. The load center is measured from the front face of the forks. The reference point for a standard load is the center of a cubic load with a side length of 1000 mm. The load capacity will be reduced when the mast is tilted forward, non-standard forks are used, or loads exceeding the normal width are handled. By referring to the load capacity chart, you can readily determine the load-bearing capacity of the standard mast at various load centers.

基本型门架 STANDARD MAST

起升高度 Lift height	承载能力 Load capacity								门架全高 Overall height of mast																									
									平衡重式叉车 Counterbalanced forklift truck								2-2.5t				3t				3.5t									
	2t		2.5t		3t		3.5t		货叉落地 Forks (on the ground)	全伸 Fully extended		自由起升高度 Free lift height		门架倾角 Mast tilt angle		货叉落地 Forks (on the ground)	全伸 Fully extended		自由起升高度 Free lift height		门架倾角 Mast tilt angle		货叉落地 Forks (on the ground)	全伸 Fully extended		自由起升高度 Free lift height		门架倾角 Mast tilt angle						
	前轮 single tire	前轮双胎 dual tire	前轮单胎 single tire	前轮双胎 dual tire	前轮单胎 single tire	前轮双胎 dual tire	前轮单胎 single tire	前轮双胎 dual tire		有挡货架 With backrest	无挡货架 Without backrest	有挡货架 With backrest	无挡货架 Without backrest	前/后 FR/RR	前轮单胎 single tire		前轮双胎 dual tire	有挡货架 With backrest	无挡货架 Without backrest	有挡货架 With backrest	无挡货架 Without backrest	前/后 FR/RR		前轮单胎 single tire	前轮双胎 dual tire	有挡货架 With backrest	无挡货架 Without backrest	有挡货架 With backrest	无挡货架 Without backrest	前/后 FR/RR	前轮单胎 single tire	前轮双胎 dual tire		
前轮 Front wheel	前轮单胎 single tire	前轮双胎 dual tire	前轮单胎 single tire	前轮双胎 dual tire	前轮单胎 single tire	前轮双胎 dual tire	前轮单胎 single tire	前轮双胎 dual tire	mm	mm	mm	mm	°	°	mm	mm	mm	mm	mm	°	°	mm	mm	mm	mm	°	°	mm	mm	mm	mm	°	°	
2000	2000	2000	2500	2500	3000	3000	3500	3500	1495	3024	2694	130	130	8/10	8/10	1565	3210	2765	135	135	8/10	8/10	1565	3210	2765	140	140	8/10	8/10	1565	3210	2765	140	140
2300	—	—	—	—	—	—	—	—	—	—	—	—	—	—	—	—	—	—	—	8/10	8/10	—	—	—	—	—	—	—	—	—	—	—	—	
2500	2000	2000	2500	2500	3000	3000	3500	3500	1745	3524	3194	130	130	8/10	8/10	1815	3710	3265	135	135	8/10	8/10	1815	3710	3265	140	140	8/10	8/10	1815	3710	3265	140	140
2700	2000	2000	2500	2500	3000	3000	3500	3500	1845	3724	3394	130	130	8/10	8/10	1915	3910	3465	135	135	8/10	8/10	1915	3910	3465	140	140	8/10	8/10	1915	3910	3465	140	140
3000	2000	2000	2500	2500	3000	3000	3500	3500	1995	4024	3694	130	130	8/10	8/10	2065	4210	3765	135	135	8/10	8/10	2065	4210	3765	140	140	8/10	8/10	2065	4210	3765	140	140
3300	2000	2000	2500	2500	3000	3000	3500	3500	2145	4324	3994	130	130	8/10	8/10	2215	4510	4065	135	135	8/10	8/10	2215	4510	4065	140	140	8/10	8/10	2215	4510	4065	140	140
3500	2000	2000	2500	2500	3000	3000	3500	3500	2245	4524	4194	130	130	8/10	8/10	2315	4710	4265	135	135	8/10	8/10	2315	4710	4265	140	140	8/10	8/10	2315	4710	4265	140	140
3600	2000	2000	2500	2500	3000	3000	3500	3500	2295	4624	4294	130	130	8/10	8/10	2365	4810	4365	135	135	8/10	8/10	2365	4810	4365	140	140	8/10	8/10	2365	4810	4365	140	140
3700	2000	2000	2500	2500	3000	3000	3500	3500	2345	4724	4394	130	130	8/10	8/10	2415	4910	4465	135	135	8/10	8/10	2415	4910	4465	140	140	8/10	8/10	2415	4910	4465	140	140
3750	—	—	—	—	—	—	—	—	—	—	—	—	—	—	—	—	—	—	—	—	—	—	—	—	—	—	—	—	—	—	—	—	—	
4000	2000	2000	2500	2500	2850	3000	3500	3500	2545	5024	4694	130	130	8/10	8/10	2615	5210	4765	135	135	8/10	8/10	2615	5210	4765	140	140	8/10	8/10	2615	5210	4765	140	140
4250	1900	2000	2100	2500	2600	3000	3300	3500	2670	5274	4944	130	130	6/6	8/10	2740	5460	5015	135	135	6/6	8/10	2740	5460	5015	140	140	6/6	8/10	2740	5460	5015	140	140
4500	1800	1900	1800	2400	2400	2900	3050	3500	2795	5524	5194	130	130	6/6	8/10	2865	5710	5265	135	135	6/6	6/6	2865	5710	5265	140	140	6/6	6/6	2865	5710	5265	140	140
4750	1450	1800	1450	2300	—	—	—	—	2920	5774	5444	130	130	6/6	6/6	2990	5960	5515	135	135	6/6	6/6	2990	5960	5515	140	140	6/6	6/6	2990	5960	5515	140	140
5000	1300	1700	1300	2200	—	2850	2600	3150	3045	6024	5694	130	130	6/6	6/6	3115	6210	5765	135	135	6/6	6/6	3115	6210	5765	140	140	6/6	6/6	3115	6210	5765	140	140
5500	—	1500	—	1700	—	—	2400	2850	3345	6524	6194	130	130	3/6	3/6	3415	6710	6265	135	135	3/6	3/6	3415	6710	6265	140	140	3/6	3/6	3415	6710	6265	140	140
6000	—	1300	—	1400	—	2000	—	2500	3595	7024	6694	140	140	3/6	3/6	3665	7210	6765	135	135	3/6	3/6	3665	7210	6765	140	140	3/6	3/6	3665	7210	6765	140	140

二级全自由门架 2-STAGE FULL FREE MAST

起升高度 Lift height	承载能力 Load capacity								门架全高 Overall height of mast																									
									平衡重式叉车 Counterbalanced forklift truck								2-2.5t				3t				3.5t									
	2t		2.5t		3t		3.5t		货叉落地 Forks (on the ground)	全伸 Fully extended		自由起升高度 Free lift height		门架倾角 Mast tilt angle		货叉落地 Forks (on the ground)	全伸 Fully extended		自由起升高度 Free lift height		门架倾角 Mast tilt angle		货叉落地 Forks (on the ground)	全伸 Fully extended		自由起升高度 Free lift height		门架倾角 Mast tilt angle						
	前轮 single tire	前轮双胎 dual tire	前轮单胎 single tire	前轮双胎 dual tire	前轮单胎 single tire	前轮双胎 dual tire	前轮单胎 single tire	前轮双胎 dual tire		有挡货架 With backrest	无挡货架 Without backrest	有挡货架 With backrest	无挡货架 Without backrest	前/后 FR/RR	前轮单胎 single tire		前轮双胎 dual tire	有挡货架 With backrest	无挡货架 Without backrest	有挡货架 With backrest	无挡货架 Without backrest	前/后 FR/RR		前轮单胎 single tire	前轮双胎 dual tire	有挡货架 With backrest	无挡货架 Without backrest	有挡货架 With backrest	无挡货架 Without backrest	前/后 FR/RR	前轮单胎 single tire	前轮双胎 dual tire		
前轮 Front wheel	前轮单胎 single tire	前轮双胎 dual tire	前轮单胎 single tire	前轮双胎 dual tire	前轮单胎 single tire	前轮双胎 dual tire	前轮单胎 single tire	前轮双胎 dual tire	mm	mm	mm	mm	°	°	mm	mm	mm	mm	mm	°	°	mm	mm	mm	mm	°	°	mm	mm	mm	mm	°	°	
2000	2000	2000	2500	2500	3000	3000	3500	3500	1500	3020	2680	505	845	8/10	8/10	1565	3201	2751	393	843	8/10	8/10	1615	3201	2791	448	858	8/10	8/10	1615	3201	2791	448	858
2300	—	—	—	—	—	—	—	—	—	—	—	—	—	—	—	—	—	—	—	—	—	—	—	—	—	—	—	—	—	—	—	—	—	
2500	2000	2000	2500	2500	3000	3000	3500	3500	1750	3520	3180	755	1095	8/10	8/10	1815	3701	3251	643	1093	8/10	8/10	1865	3701	3291	698	1108	8/10	8/10	1865	3701	3291	698	1108
2700	2000	2000	2500	2500	3000	3000	3500	3500	1850	3720	3380	855	1195	8/10	8/10	1915	3901	3451	743	1193	8/10	8/10	1965	3901	3491	798	1208	8/10	8/10	1965	3901	3491	798	1208
3000	2000	2000	2500	2500	3000	3000	3500	3500	2000	4020	3680	1005	1345	8/10	8/10	2065	4201	3751	893	1343	8/10	8/10	2115	4201	3791	948	1358	8/10	8/10	2115	4201	3791	948	1358
3300	2000	2000	2500	2500	3000	3000	3500	3500	2150	4320	3980	1155	1495	8/10	8/10	2215	4501	4051	1043	1493	8/10	8/10	2265	4501	4091	1098	1508	8/10	8/10	2265	4501	4091	1098	1508
3500	2000	2000	2500	2500	3000	3000	3500	3500	2250	4520	4180	1255	1595	8/10	8/10	2315	4701	4251	1143	1593	8/10	8/10	2365	4701	4291	1198	1608	8/10	8/10	2365	4701	4291	1198	1608
3600	2000	2000	2500	2500	3000	3000	3500	3500	—	—	—	—	—	—	—	—	—	—	—	—	—	—	—	—	—	—	—	—	—	—	—	—	—	
3700	2000	2000	2500	2500	3000	3000	3500	3500	2350	4720	4380	1355	1695	8/10	8/10	2415	4901	4451	1243	1693	8/10	8/10	2465	4901	4491	1298	1708	8/10	8/10	2465	4901	4491	1298	1708
4000	2000	2000	2500	2500	2850	3000	3500	3500	2550	5020	4680	1555	1895	8/10	8/10	2615	5201	4751	1443	1893	8/10	8/10	2665	5201	4791	1498	1908	8/10	8/10	2665	5201	4791	1498	1908
4250	1900	2000	2100	2500	2600	3000	3300	3500	2675	5270	4930	1580	1920	6/6	8/10	2740	5452	5002	1568	2018	6/6	8/10	2790	5452	5042	1623	2033	6/6	8/10	2790	5452	5042	1623	2033
4500	1800	1900	1800	2400	2400	2900	3050	3500	2800	5520	5180	1805	2145	6/6	8/10	2865	5701	5251	1693	2143	6/6	8/10	2915	5701	5291	1748	2158	6/6	8/10	2915	5701	5291	1748	2158

三级全自由门架 3-STAGE FULL FREE MAST

||
||
||